



# PRICE LIST MONTEMAR FIRST PHASE

Completion May 2027



Nº PARCELA	M2 PARCELA	Nº Bedrooms	Nº Bathrooms	Toilet	Build area	Price	Price with solarium
<b>VILLA MODEL 1</b>							
2.2	357,39	3	2	1	123,25	469.900,00 €	496.400,00 €
2.3	357,39	3	2	1	123,25	469.900,00 €	496.400,00 €
2.4	357,39	3	2	1	123,25	469.900,00 €	496.400,00 €
2.5	357,39	3	2	1	123,25	469.900,00 €	496.400,00 €
<b>ONE LEVEL 1ST PHASE MODEL 3</b>							
3.2	299,45	3	2		105,63	389.900,00 €	413.400,00 €
3.3	299,45	3	2		105,63	389.900,00 €	413.400,00 €
3.4	299,45	3	2		105,63	389.900,00 €	413.400,00 €
3.5	299,45	3	2		105,63	389.900,00 €	413.400,00 €
3.6	299,45	3	2		105,63	389.900,00 €	413.400,00 €
3.7	299,45	3	2		105,63	<b>SHOW HOUSE</b>	

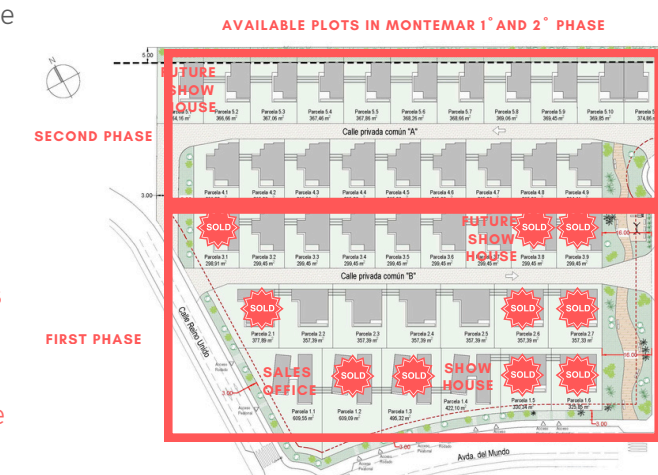
INCLUIDO EN EL PRECIO /INCLUDED IN THE PRICE

\* Incluido en el precio halógenos led en salón-cocina, dormitorios y baños. Cocina terminada con electrodomésticos (horno, campana, vitrocerámica, frigo, lavavajillas y microondas), lavadora, suelo radiante en baños y piscina privada en el jardín.

\*Included in the price are the led lights in the living room/kitchen/berooms, and bathrooms, kitchen with white goods (oven, hob, extractor fan, fridge-freezer, dishwasher, microwave), washing machine, heated floor in the bathrooms. And private pool in the garden.

Reserva/ Deposit: 5.000€  
 Contrato /Contract: 10% in 10 days  
 En un mes/ in a month: 40%  
 En escritura / on completion: 50%

Entrega en Mayo 2027  
 Completion May 2027



ASK FOR OTHER MODELS

## Villa Model 1



Planta Baja

### Superficies

Planta	Uso	Sup.útil	Sup.const.
baja	vivienda	105.50 m <sup>2</sup>	123.25 m <sup>2</sup>
	porche	6.30 m <sup>2</sup>	6.30 m <sup>2</sup>
<b>Total</b>		<b>111.80 m<sup>2</sup></b>	<b>129.55 m<sup>2</sup></b>

Piscina	17.50 m <sup>2</sup>
Terraza	91.30 m <sup>2</sup>

## One Level Model 3



Planta Baja

### Superficies

Planta	Uso	Sup.útil	Sup.const.
baja	vivienda	90.85 m <sup>2</sup>	105.63 m <sup>2</sup>
<b>Total</b>		<b>90.85 m<sup>2</sup></b>	<b>105.63 m<sup>2</sup></b>

Piscina	18.00 m <sup>2</sup>
Terraza	99.35 m <sup>2</sup>

# PRICE LIST MONTEMAR SECOND PHASE

*Completion October 2028*



Nº PARCELA	M2 PARCELA	Nº Bedrooms	Nº Bathrooms	Toilet	Build area	Price	Price with solarium
<b>ONE LEVEL 2ND PHASE MODEL 3</b>							
4.1	298,91	3	2		105,63	409.900,00 €	433.400,00 €
4.2	299,45	3	2		105,63	405.900,00 €	429.400,00 €
4.3	299,45	3	2		105,63	405.900,00 €	429.400,00 €
4.4	299,45	3	2		105,63	405.900,00 €	429.400,00 €
4.5	299,45	3	2		105,63	405.900,00 €	429.400,00 €
4.6	299,45	3	2		105,63	405.900,00 €	429.400,00 €
4.7	299,45	3	2		105,63	405.900,00 €	429.400,00 €
4.8	299,45	3	2		105,63	405.900,00 €	429.400,00 €
4.9	299,45	3	2		105,63	415.900,00 €	439.400,00 €
<b>TWO LEVEL 2ND PHASE MODEL 1</b>							
5.1	364,16	3	2	1	125,98	<b>FUTURE SHOW HOUSE</b>	
5.2	366,66	3	2	1	125,98	499.900,00 €	N/A
5.3	367,06	3	2	1	125,98	499.900,00 €	N/A
5.4	367,46	3	2	1	125,98	499.900,00 €	N/A
5.5	367,86	3	2	1	125,98	499.900,00 €	N/A
5.6	368,26	3	2	1	125,98	499.900,00 €	N/A
5.7	368,66	3	2	1	125,98	499.900,00 €	N/A
5.8	369,06	3	2	1	125,98	499.900,00 €	N/A
5.9	369,45	3	2	1	125,98	499.900,00 €	N/A
5.10	369,85	3	2	1	125,98	499.900,00 €	N/A
5.11	374,86	3	2	1	125,98	504.900,00 €	N/A

## INCLUIDO EN EL PRECIO /INCLUDED IN THE PRICE

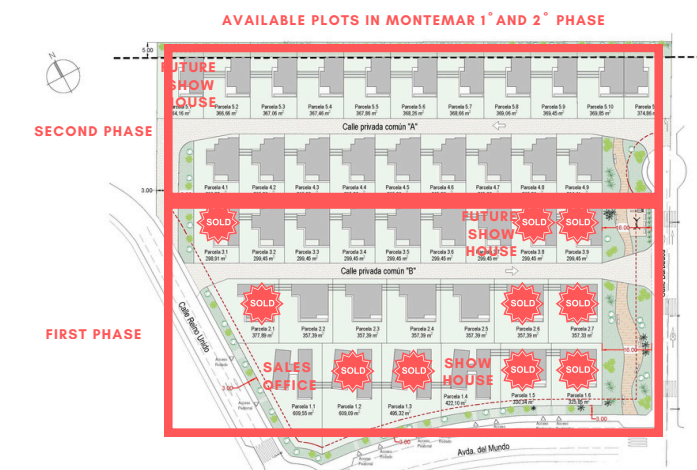
\* Incluido en el precio halógenos led en salón-cocina, dormitorios y baños. Cocina terminada con electrodomésticos (horno, campana, vitrocerámica, frigo, lavavajillas y microondas), lavadora, suelo radiante en baños y piscina privada en el jardín.

\*Included in the price are the led lights in the living room/kitchen/bedrooms, and bathrooms, kitchen with white goods (oven, hob, extractor fan, fridge-freezer, dishwasher, microwave), washing machine, heated floor in the bathrooms. And private pool in the garden.

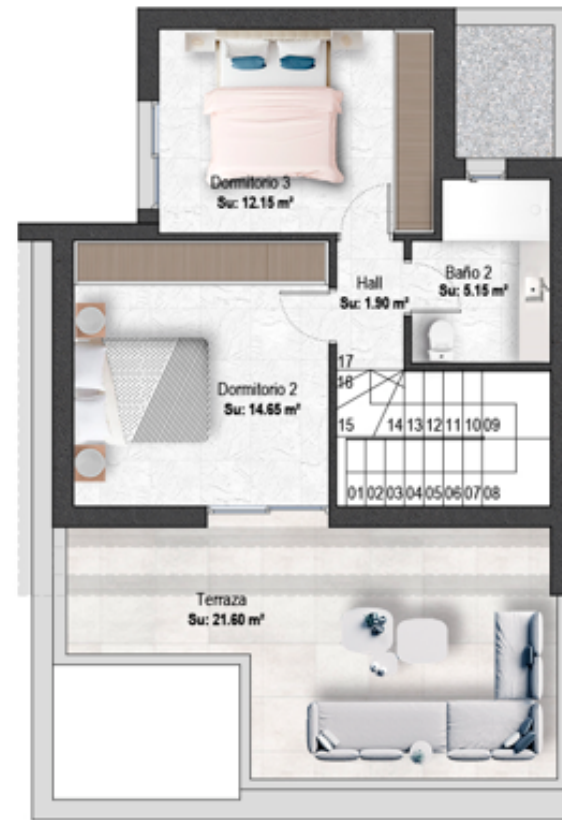
ASK FOR OTHER MODELS

Reserva/ Deposit: 5.000€  
 Contrato /Contract: 10% in 10 days  
 En un mes/ in a month: 40%  
 En escritura / on completion: 50%

Entrega 1 año desde la firma del contrato.  
**Completion one year from signed contract.**



## Two Level Model 1



### Superficies

Planta	Uso	Sup.útil	Sup.const.
baja	vivienda	59.35 m <sup>2</sup>	75.48 m <sup>2</sup>
primera	vivienda	33.85 m <sup>2</sup>	50.50 m <sup>2</sup>
Total		93.20 m <sup>2</sup>	125.98 m <sup>2</sup>
Piscina			18.00 m <sup>2</sup>

## One Level Model 3



Planta Baja

### Superficies

Planta	Uso	Sup.útil	Sup.const.
baja	vivienda	90.85 m <sup>2</sup>	105.63 m <sup>2</sup>
Total		90.85 m <sup>2</sup>	105.63 m <sup>2</sup>

Piscina 18.00 m<sup>2</sup>  
Terraza 99.35 m<sup>2</sup>

# AVAILABLE PLOTS IN MONTEMAR 1ST AND 2ND PHASE



